



GLENCOE INDOOR/OUTDOOR DINING CHAIR

Dimensions

17"W 19"D 28"H
Seat - 17.5"H

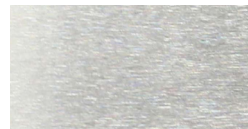
Shown in sanded stainless steel

14-16 weeks lead time

Rubber glides available for interior use

Custom sizes and outdoor furniture covers
upon request

Available in



Stainless Steel
Sanded

C.O.M./C.O.L.